



# GMT MONTHLY MEMBERSHIP PROGRESS REPORT

Results as of: 2/29/2020

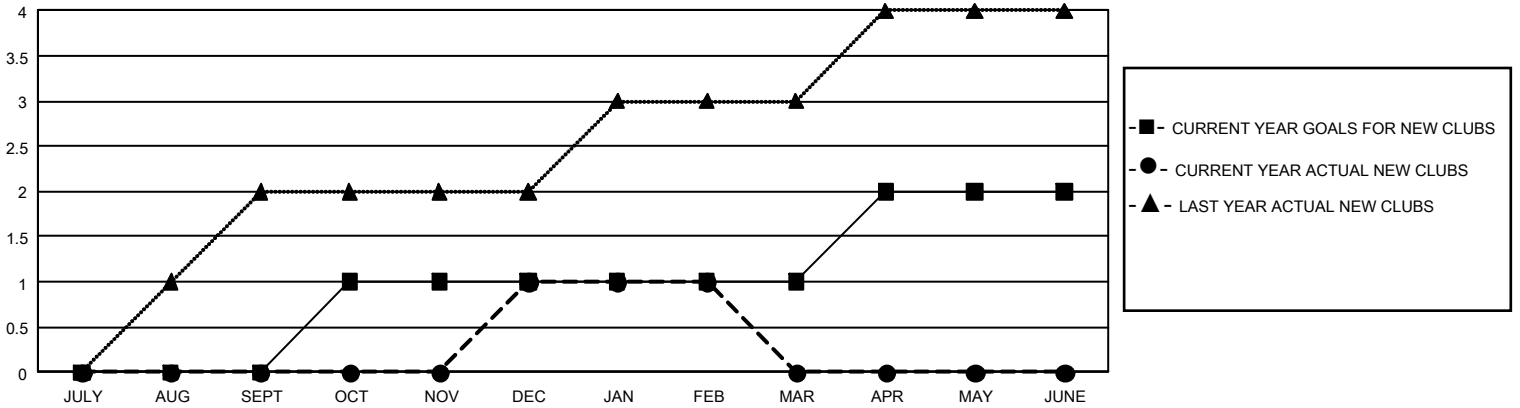
## GMT Constitutional Area 4, Group G

GMT: OPEN

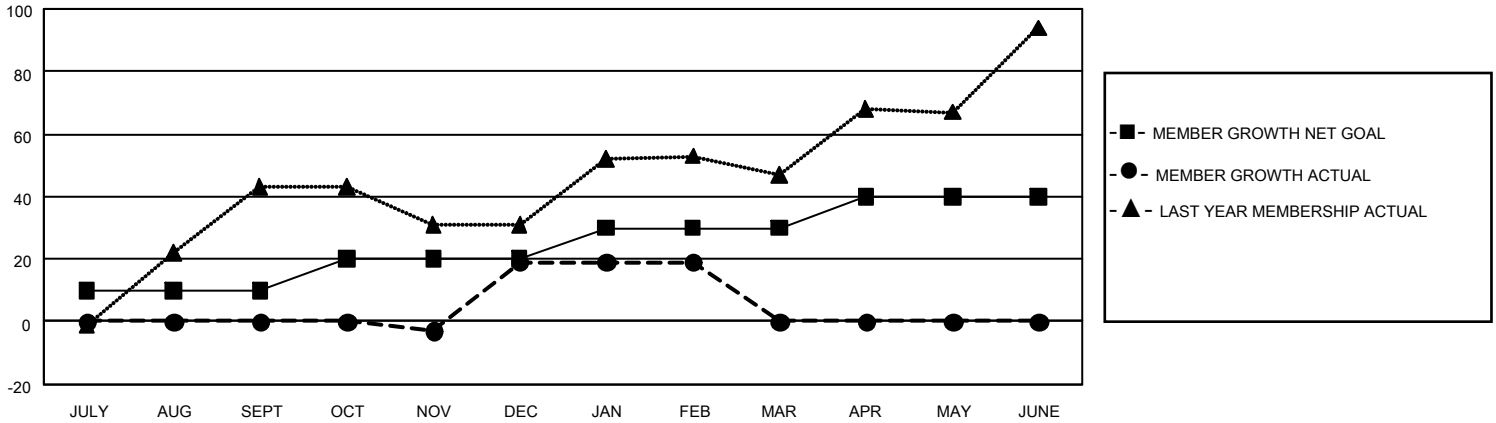
REPORT DOES NOT INCLUDE CLUBS IN UNDISTRICTED AREAS.

Clubs				Members			
RESULTS FOR 2019-2020				RESULTS FOR 2019-2020			
QUARTER	NEW CLUB GOAL	NEW CLUBS	DROPPED CLUBS	QUARTER	MEMBER GROWTH NET GOAL	MEMBER GROWTH ACTUAL	DROPPED MEMBERS ACTUAL (including transfers)
JULY/AUG/SEPT	0	0	0	JULY/AUG/SEPT	30	0	0
OCT/NOV/DEC	3	1	0	OCT/NOV/DEC	30	22	3
JAN/FEB/MAR	0	0	0	JAN/FEB/MAR	30	0	0
APR/MAY/JUNE	3	0	0	APR/MAY/JUNE	30	0	0

**GOALS AND ACTUAL NEW CLUBS CUMULATIVE**



**GOALS AND ACTUAL MEMBERS CUMULATIVE**



DROPPED CLUBS: 0	1 CLUBS OF 24 ADDED 1 OR MORE NEW MEMBERS	<b>GENDER DISTRIBUTION</b> MALE 225 (39.06%) FEMALE 351 (60.94%)
<b>DROPPED MEMBERS</b> DECEASED 0 CLUB CANCELLED 0 OTHER 3 <hr/> TOTAL 3	<a href="#">CLICK HERE FOR CUMULATIVE MEMBERSHIP DATA</a>	TOTAL FAMILY UNIT MEMBERS 304 FAMILY MEMBERS PAYING HALF DUES 229